

# REDXA/MARS Field Day 2022



Ron  
N6IE

# REDXA/MARS Field Day 2022

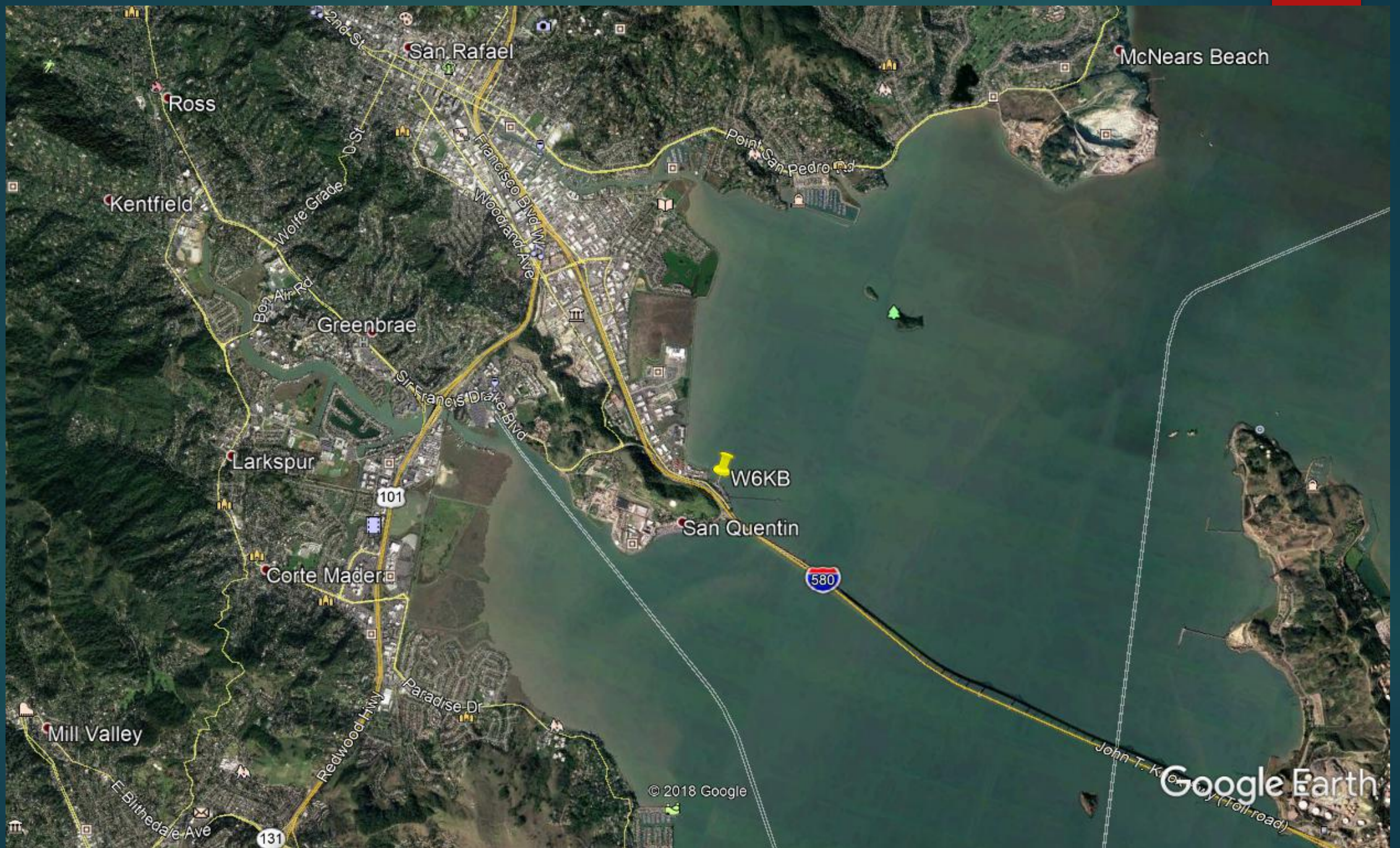
**BACK TO OUR OLD LOCATION: MARIN ROD & GUN CLUB!**  
***OUR RETURN FROM COVID LOCKDOWN!***

FRIDAY, JUNE 24  
SATURDAY, JUNE 25  
SUNDAY, JUNE 26

# REDXA/MARS Field Day 2022

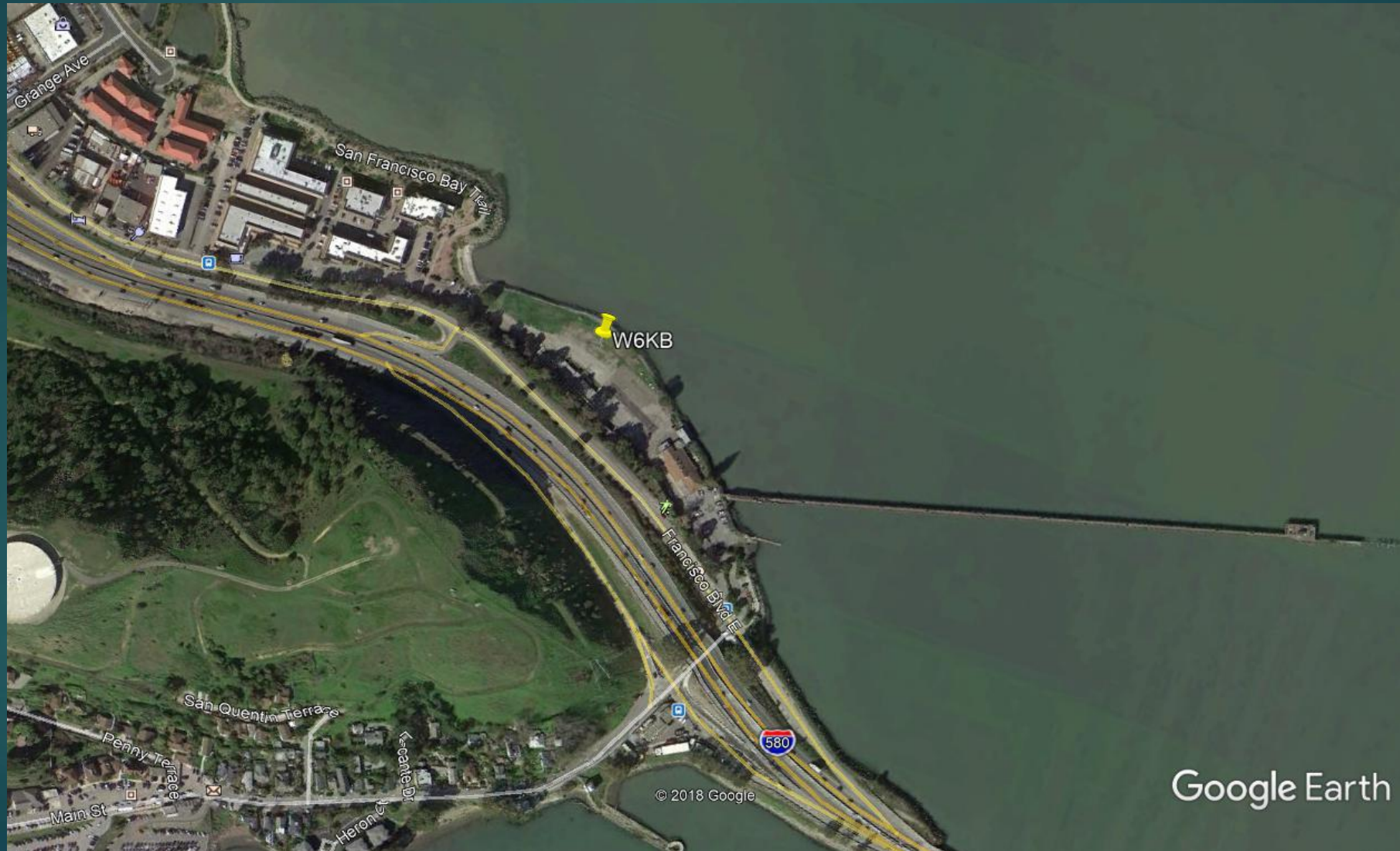








# REDXA/MARS Field Day 2022





# Site Map



# 2022 Items

- ▶ COVID Protocols
- ▶ New ARRL FD Rule: Max Low Power is 100 Watts
- ▶ 3<sup>rd</sup> station will be FT8 / FT4
- ▶ SteppIR BigIR Vertical will have 16 40 meter radials with spools







# 2022 COVID Protocols

- ▶ ~~You must have proof of vaccination~~
- ▶ Need list of all who will be attending
- ▶ COVID Compliance Officer on duty to verify
- ▶ Don't attend if you have a fever or COVID symptoms
- ▶ Hand sanitizer wipes at all stations. Use at start of shift
- ▶ State and county requirements will be observed





# Equipment

## ► K3's Phone & CW



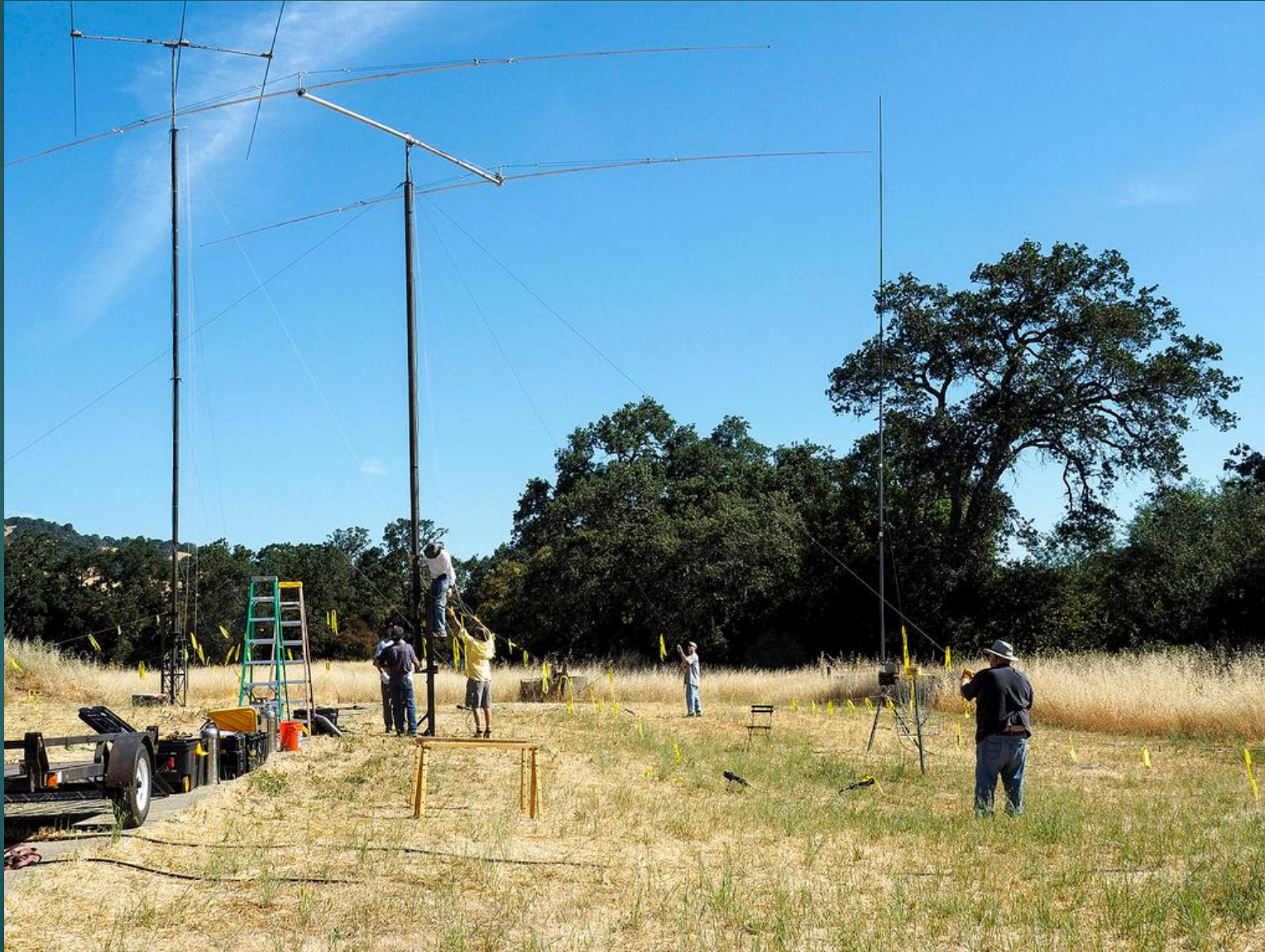
# Equipment

## ► Orion II for FT8 / FT4





# Equipment



# Antennas

- ▶ 2 x 3-element SteppIR @ 50'
- ▶ 2-Element 40 meter beam @ 50'
- ▶ BigIR Vertical (80-10)
- ▶ Inverted V's (75/40)



# Antenna Termination Board



# Meals

Friday: Lunch – *Thanks Marilyn N6VAW!!!*

Saturday: Dinner

Sunday: Breakfast



# Field Day Scoring



- CLASS 3A
- BASIC POINTS: 1 FOR PHONE, 2 FOR CW
- MULTIPLIER: X2 FOR LOW POWER

# Field Day Scoring

## Bonus Points

- EMERGENCY POWER: 300 POINTS
- MEDIA PUBLICITY: 100 POINTS
- MESSAGE TO SECTION MANAGER: 100 POINTS
- MESSAGE HANDLING: 10 PER, 100 POINTS TOTAL
- ALTERNATE POWER (5 QSOS) 100 POINTS
- COPY ARRL BULLETIN: 100 POINTS
- EDUCATIONAL ACTIVITY (N1MM FD VIDEO) 100 POINTS
- VISIT BY 'SERVED AGENCY' (TBA): 100 POINTS
- VISIT BY ELECTED OFFICIAL (TBA): 100 POINTS
- WEB SUBMISSION OF LOGS: 50 POINTS



# Field Day Scoring

## Bonus Points

- Youth Participation:
  - Op 18 or younger: 20 points. Only one QSO needed
  - 100 Points Max

# N1MM Logging Program

Score - 6,814 Points

Band	Mode	QSOs	Pts	Pt/Q
3.5	CW	164	328	2.0
3.5	LSB	70	70	1.0
7	CW	127	254	2.0
7	LSB	422	422	1.0
14	CW	645	1290	2.0
14	USB	978	978	1.0
21	CW	26	52	2.0
21	USB	13	13	1.0
Total	Both	2445	3407	1.4

Score: 6,814  
1 Mult = 1.0 Q's

Info - W6KB - Exch: 2A SF

Q's - 10, 100, 60m, 11m

Goal 0  
0 0 0 0

RONCASUS - Q's/Hr

100				
80				
60				
40				
20				
0				

Next Goal 0

N6IE

Last QSO

> 24hrs

5/12/2017 18:12:32Z ARRL Field Day (June) - ARRL FD.s3db

YYYY-MM-DD HH:MM	Call	Freq	Mode	Exch	Sect	Pts	Computer	Op
2016-06-26 17:52	AI9R	14179.50	USB	1A	IL	1	RONASUS	N6IE
2016-06-26 17:52	W0KU	21041.18	CW	1A	CO	2	MIJ-JBDWS71	K6SRZ
2016-06-26 17:53	WA0DE	14179.50	USB	3A	CO	1	RONASUS	N6IE
2016-06-26 17:53	W9P	21041.18	CW	2A	IL	2	MIJ-JBDWS71	K6SRZ
2016-06-26 17:54	K7SI	14179.50	USB	5A	ID	1	RONASUS	N6IE
2016-06-26 17:55	KM7W	21041.18	CW	2A	MT	2	MIJ-JBDWS71	K6SRZ
2016-06-26 17:56	W0FSD	14179.00	USB	2A	SD	1	RONASUS	N6IE
2016-06-26 17:56	K4LRA	14179.00	USB	4A	SFL	1	RONASUS	N6IE
2016-06-26 17:56	KN1CBR	21041.18	CW	1D	CO	2	MIJ-JBDWS71	K6SRZ
2016-06-26 17:56	KA4OUO	14179.00	USB	1B	MDC	1	RONASUS	N6IE
2016-06-26 17:57	N7EL	14179.00	USB	1D	AZ	0	RONASUS	N6IE
2016-06-26 17:57	K0UK	21041.18	CW	1D	CO	2	MIJ-JBDWS71	K6SRZ
2016-06-26 17:57	N0ELY	14179.00	USB	1B	CO	1	RONASUS	N6IE
2016-06-26 17:58	W4CA	14179.00	USB	3A	VA	0	RONASUS	N6IE
2016-06-26 17:58	K3JT	21041.18	CW	1D	WV	2	MIJ-JBDWS71	K6SRZ
2016-06-26 17:59	W2RC	21041.18	CW	2A	NLI	2	MIJ-JBDWS71	K6SRZ
2016-06-26 17:59	K4GVA	14179.00	USB	4A	VA	1	RONASUS	N6IE
2016-06-26 17:59	K8DIL	14179.00	USB	1A	OH	1	RONASUS	N6IE
2016-07-03 22:07	KH6GJV	14179.00	USB			0	RONASUS	N6IE

Gray Line

Setup

Check Log/Master/Call history

Log	Master	Call hist
1957	43229	3498

14179.00 USB Manual - VFO A

File Edit View Tools Config Window Help

CW PH

80 80

40 40

20 20

15 15

10 10

Class

Section

Run S&P

F1 S&P CQ

F2 Exch

F3 Spare

F4 W6KB

F5 His Call

F6 W6KB

F7 Rpt Exch

F8 Agn?

F9 Zone

F10 Spare

F11 Spare

F12 Wipe

Esc: Stop

Wipe

Log It

Edit

Mark

Store

Spot It

QRZ

Heading appears here when enabled.

Call history UserText appears here when enabled.

0 spots loaded after filtering.

2445 6,814

Start

2017 FD

Inbox - ronc@s...

3 Reminder(s)

N1MM Logger ...

Field Day 2017...

Field Day 2017...

2016 Rules.pdf ...

14179.00 USB ...

Desktop

11:12 AM



# Marin Rod & Gun

## What you need to know

- BAR OPENS AT NOON
- PLEASE SIGN GUEST BOOK IF YOU WANT A DRINK
- OVERNIGHT CAMPING—OK!
- PETS—**NO!**
- FISHING—OK!

# Good Ideas




- BRING SUN SCREEN
- INSECT REPELLENT
- CLOTHING: HOT DURING DAY, COLD DURING NIGHT





# T·E·A·M·W·O·R·K

TEAMWORK IS THE ABILITY TO WORK TOGETHER TOWARD A COMMON VISION.  
THE ABILITY TO DIRECT INDIVIDUAL ACCOMPLISHMENT TOWARD  
ORGANIZATIONAL OBJECTIVES, IT IS THE FUEL THAT  
ALLOWS COMMON PEOPLE TO ATTAIN  
UNCOMMON RESULTS.



Will this be our LAST  
Field Day?

IT'S UP TO YOU!

# We Need Volunteers!

- ▶ Transportation Captain (need truck to haul trailer)
- ▶ Help loading equipment at Fred's Saturday 6/18
- ▶ CW Station Captain
- ▶ FT8/4 Station Captain
- ▶ 'TEAM VERTICAL' Captain and Crew
- ▶ Safety Captain
- ▶ Ops, Saturday night, Sunday AM
- ▶ Friday Setup/Sunday teardown workers!



# Things We Need

- ▶ Saw horses
- ▶ Lights for shacks

# Join Us for Field Day 2022!

- Antenna Setup: **Friday**, June 24 10:00 am
- Operate: **Saturday**, June 25 11:00 am
- Break Down: **Sunday**, June 26, 11:00 am
- Advance Operating Reservations – N6IE  
(Sign-in Boards will be used)

# REDXA/MARS Field Day 2022



Ron  
N6IE